

# Metro Lines

- 1 PINAR DE CHAMARTÍN / VALDECARROS
- 2 LAS ROSAS / CUATRO CAMINOS
- 3 VILLAVERDE ALTO / MONCLOA
- 4 ARGÜELLES / PINAR DE CHAMARTÍN
- 5 ALAMEDA DE OSUNA / CASA DE CAMPO
- 6 CIRCULAR
- 7 HOSPITAL DEL HENARES / PITIS
- 8 NUEVOS MINISTERIOS / AEROPUERTO
- 9 MIRASIERRA / ARGANDA DEL REY
- 10 HOSPITAL INFANTA SOFÍA / PUERTA DEL SUR
- 11 PLAZA ELÍPTICA / LA FORTUNA
- 12 METROSUR
- R ÓPERA / PRÍNCIPE PÍO

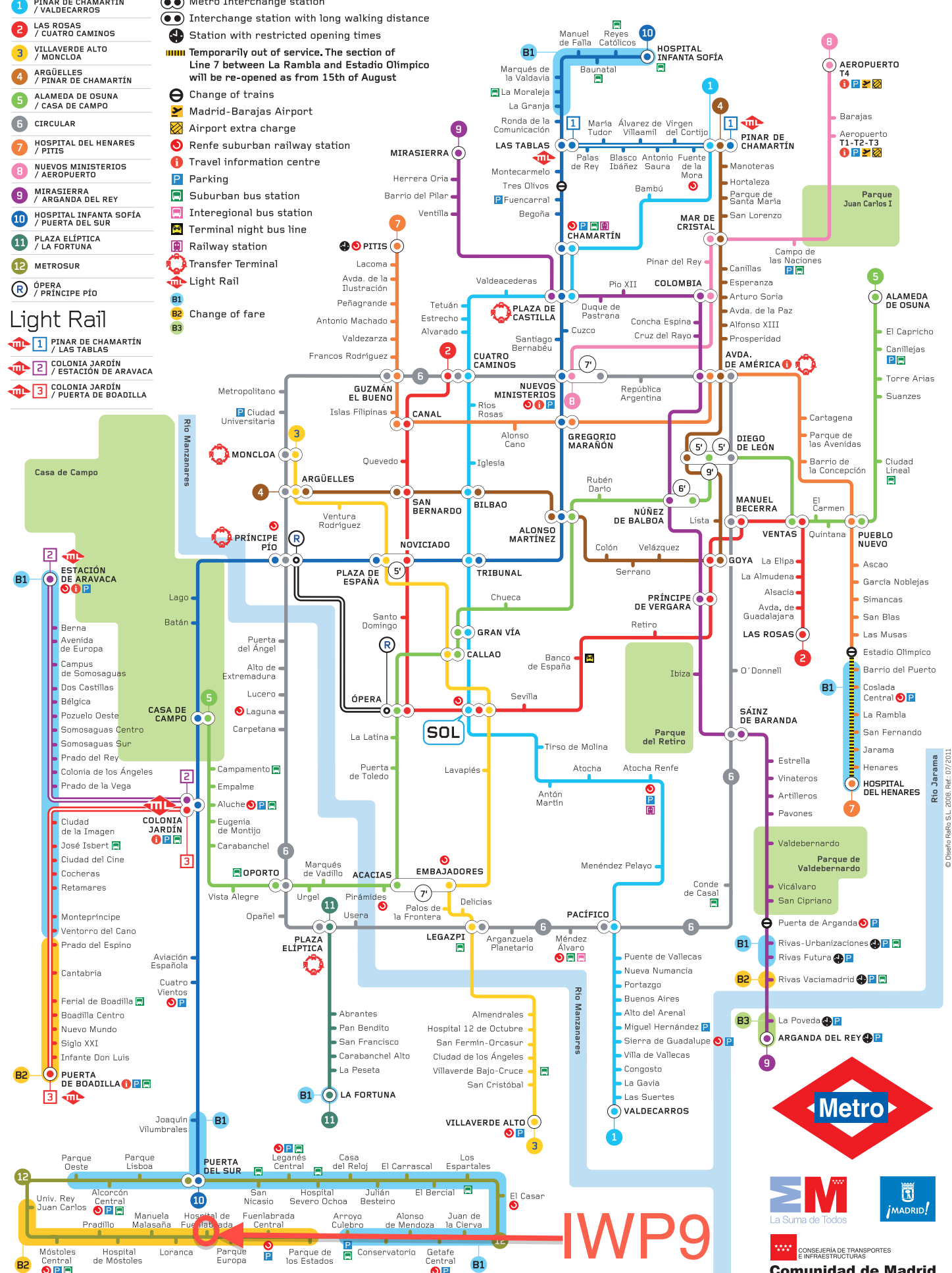
# Light Rail

- 1 PINAR DE CHAMARTÍN / LAS TABLAS
- 2 COLONIA JARDÍN / ESTACIÓN DE ARAVACA
- 3 COLONIA JARDÍN / PUERTA DE BOADILLA

# Keys

- Metro Interchange station
- Interchange station with long walking distance
- Station with restricted opening times
- Temporarily out of service. The section of Line 7 between La Rambla and Estadio Olímpico will be re-opened as from 15th of August
- Change of trains
- Madrid-Barajas Airport
- Airport extra charge
- Renfe suburban railway station
- Travel information centre
- Parking
- Suburban bus station
- Interegional bus station
- Terminal night bus line
- Railway station
- Transfer Terminal
- Light Rail
- Change of fare

# Schematic map of the subway network



IWP9



© Diario Real, S.L. 2008. Ref: 07/2011